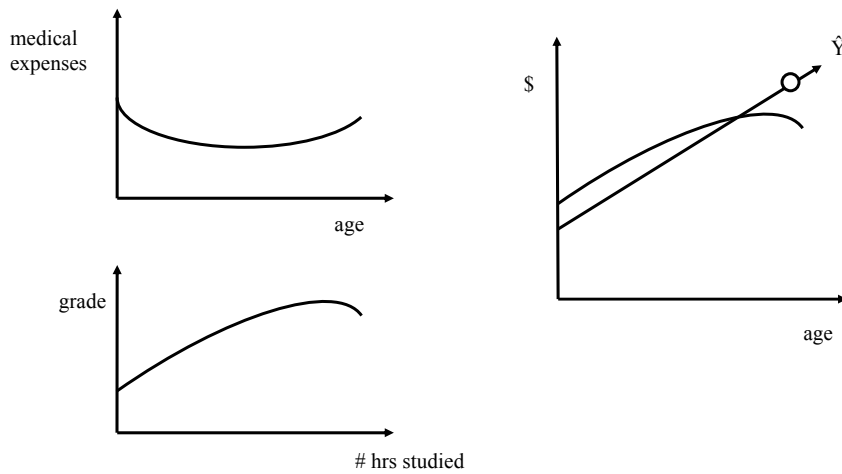


Polynomials



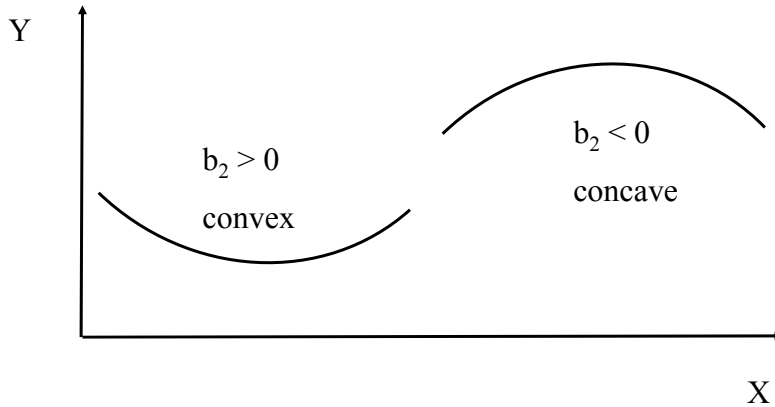
Polynomials

$$\hat{Y} = a + b_1X + b_2X^2 + \dots + b_kX^k$$

Quadratic function:

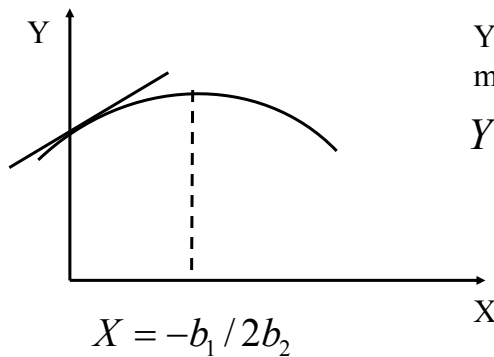
$$\hat{Y} = a + b_1X + b_2X^2$$

Polynomials



Polynomials

$$\hat{Y} = a + b_1X + b_2X^2$$



Y value at
maximum point:
 $Y = a - (b_1^2/4b_2)$